

# ACRA

CUTTER AND TOOL GRINDER



ATC-MN2

# Monaset Cutter & Tool Grinder



1. Screw slot surface grinding



2. Screw angular grinding



3. Milling cutter end grinding



4. Grinding outer diameter



5. Side milling cutter grinding



6. Formed milling cutter grinding



7. Centering device



8. ARC grinding



9. Vertical milling cutter grinding



10. Drill bit grinding





# Monaset Cutter & Tool Grinder

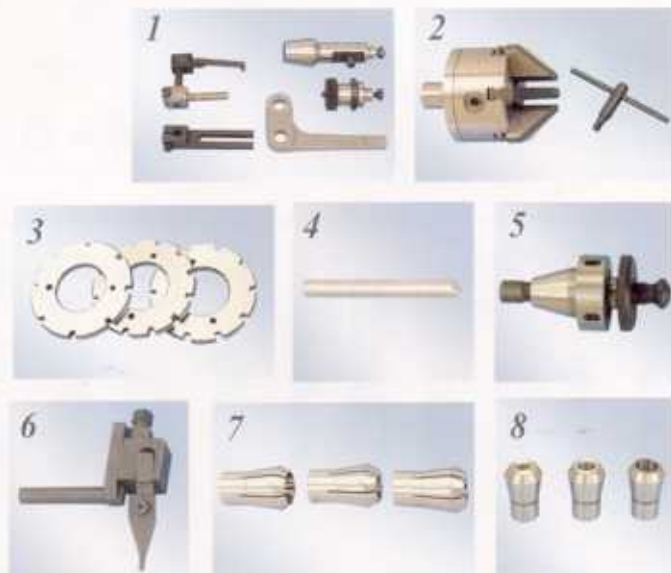
## Standard Accessories of Modle CM-2

1. Wheelhead toothrest assembly with extension bar
2. Grinding wheel guards with extension bar
3. Front stock support
4. Straight cylindrical collets:  
(Please select "A" or "B")  
(A) metric sizes: 3, 5, 6, 8, 10, 12, 16, 20, 25 & 32mm  
(B) inch sizes: 1/8, 3/16, 1/4, 5/16, 3/8, 7/16, 1/2, 5/8, 3/4, 7/8, 1, 1 1/8 & 1 1/4"  
Also including set of 3 taper collets:  
No. 2, 3, 4 morse taper
5. Set of (5) grinding wheel flanges.  
(4) standard and (1) extension flange.
6. Diamond holder bracket
7. Wrench for workhead.
8. Toothrest centering gauge.
9. Adjustable tailstock support unit.
10. Spanner for grinding wheel
11. Levelling blocks
12. Standard arbor
13. Screw drive
14. Set of wrenches.
15. Double-end spanner
16. Set of (4) index plates for spiral lead Mechanism 0, 8, 10 & 12 divisions.
17. Tool box
18. Oil bottle



## Optional Accessories

1. Large cutter radius grinding attachment.
2. Four-inch universal six-jaw chuck for workhead.
3. Additional index plates for spiral lead indexing unit. (Please indicate your sizes of specification)
4. Additional diamond truing tool with diamond nib.
5. Grinding wheel flange for mounting grinding wheel with 1/2" hole
6. Spring-loaded index pawl for workhead index plates.
7. Additional straight cylindrical collets. (Please indicate your sizes of specification)
8. Set of (3) taper collects: No. 5, 7 & 9  
Brown and Sharpe (Available for U.S.A. only)



# Monaset Cutter & Tool Grinder

## Standard Accessories of Modle CM-A

1. Wheelhead toothrest assembly with extension bar
2. Grinding wheel guards with extension bar
3. Front stock support
4. Straight cylindrical collets:  
(Please select "A" or "B")  
(A) metric sizes: 3, 5, 6, 8, 10, 12, 16, 20, 25 & 32mm  
Also including set of 3 taper collets:  
No. 2, 3, 4 morse taper  
(B) inch sizes: 1/8, 3/16, 1/4, 5/16, 3/8, 7/16, 1/2, 5/8, 3/4, 7/8, 1, 1 1/8 & 1 1/4"
5. Set of (5) grinding wheel flanges.  
(4) standard and (1) extension flange.
6. Diamond holder bracket
7. Wrench for workhead.
8. Toothrest centering gauge.
9. Adjustable tailstock support unit.
10. Spanner for grinding wheel x2
11. Levelling blocks x 4
12. Standard Arbor
13. Screw drive x 2 ; Set of wrenches.
14. Double-end spanner
15. Set of (4) index plates for spiral lead Mechanism 0,8,10 & 12 divisions.
16. Tool box
17. Oil bottle
18. Grinding wheel (one each of straight, flaring cup and dish shape)
19. Additional diamond truing tool with diamond nib.
20. Spring-loaded index pawl for workhead
21. 1/2" wheel flange and spanner
22. Grinding attachment for large face milling cutter
23. 4" six-jaw chuck for workhead
24. Wheel flange with 2 collets for internal grinding
25. Wet grinding attachment with water proof equipment



## Optional Accessories

1. B & S specifications: taper collects No. 5, 7, 9.
2. Frequency inverter (varies with motor horsepower)
3. Grinding wheel spindle motor (1Hp, 2Hp)
4. Special index plate (as specified)
5. Dust collector attachment

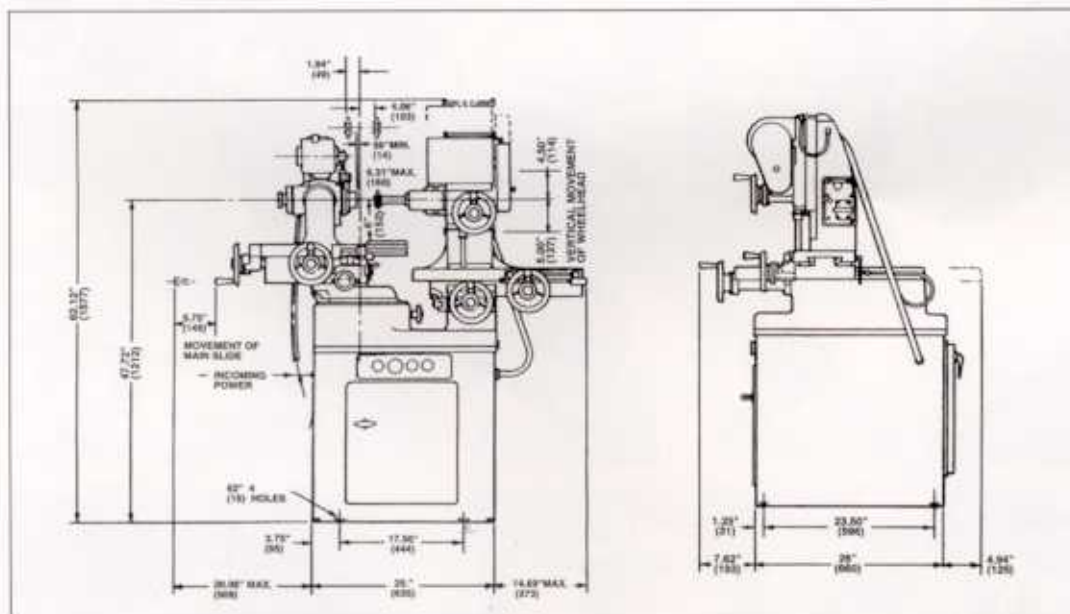




## Machine Specifications

Capacity :			Range:		
Workhead--			Workhead--		
Swing over main slide, max dia	304mm	12"	Main slide travel	146mm	5.75"
Collet work dia, max	31mm	1.25"	Offset slide travel, total	133mm	5.25"
min	3mm	0.12"	-front of center	76mm	3"
Lead generated by spiral lead mechanism, min	45mm	1.81"	-rear of center	57mm	2.25"
Lead between spindle nose and tail center, max	152mm	6"	Workhead angular adjustment--		
Wheelhead--			Horizontal plane(turntable base)	235°	
Grinding wheel dia, max	100mm	4"	Vertical plane, above center	40°	
Spindle Speeds:			below center	40°	
Workhead , one speed	436rpm		Wheelhead--		
wheelhead, three speeds	4000, 5729, 8000rpm		Longitudinal slide travel	152mm	6"
Motors, Electric:			Vertical slide travel, total	241mm	9.50"
Workhead drive, AC	1/4Hp	0.186kw	-above center	114mm	4.50"
Wheelhead drive, AC	1/2Hp	0.373kw	-below center	127mm	5"
Floor Space and Weight:			Cross slide travel , total	190mm	7.50"
Area of base only	635mm x 660mm	25" x 26"	-front of center	76mm	3"
Area required for machine	1524mm x 1701mm	60" x 67"	-rear of center	114mm	4.50"
Height from floor to center of workhead spindle	1212mm	47.72"			
Height, overall with wheelhead raised	1517mm	62.12"			
Net weight	691kg	1525lbs			

## Model CM-2/CM-A



**TOP WORK Industry Co., Ltd.**

No.9, 6<sup>th</sup> Road, Taichung Industrial District, Taichung 40768, Taiwan.

TEL:886-4-23581558 FAX:886-4-23581268

http://www.topwork.com.tw E-mail:topwork@ms12.hinet.net